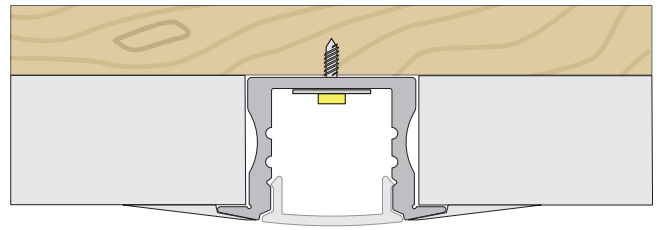
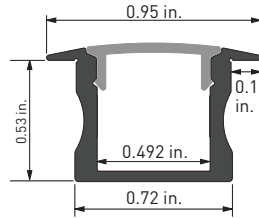


Ankr® 4 Mud-In/In-Wall Channel



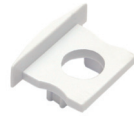
shown with closed end cap



Designed for mudding in to drywall, Ankr 4 features flanges that make for a seamless installation. A countersunk hole is pre-drilled in the bottom of the channel every 4 inches for screwing into studs, making installation flexible and easy.

Ankr 4 can be mounted in drywall that is 1/2 in. or thicker without altering the studs, and is recommended for 5/8 in. or thicker drywall.

- Thermally-balanced design for maximum cooling
- Channel covers protect LED tape light
- Diffuser covers provide smooth light diffusion with no hotspots
- Full range of accessories for a great-looking installation
- Complete kits available to create a finished fixture



open end cap

Item #	Description
AL-50-17-0111-KIT	4 ft. kit: includes 1 channel, 1 frosted diffuser cover, 2 pair pack of plastic end caps
AL-50-17-0121-KIT	8 ft. kit: includes 1 channel, 1 frosted diffuser cover, 4 pair pack of plastic end caps
AL-50-17-0011-AL	channel - 4 ft. - aluminum finish *
AL-50-17-0021-AL	channel - 8 ft. - aluminum finish *
AL-50-17-9902-FRT	frosted diffuser cover - 4 ft.
AL-50-17-9903-FRT	frosted diffuser cover - 8 ft.
AL-50-17-9913-CLR	clear cover - 8 ft.
AL-50-17-9932-PRM	premium diffuser cover - 4 ft.
AL-50-17-9933-PRM	premium diffuser cover - 8 ft.
AL-50-17-9951-WH	plastic end caps 2 pair pack: 2 open, 2 closed - white
AL-50-17-9956-WH	plastic end caps 10 pair pack: 10 open, 10 closed - white

*Channels are also available in custom powder-coated finishes, including white and black, by special order.

This channel is compatible with selected tape light models only, see the "Continua Channel & Tape Light Compatibility Chart" PDF on the Resources page on our website for information.